

# SAFE-STOP™ TMA

## ECONOMICAL TMA PROTECTION THAT MEETS NCHRP 350, TL-3



### OVERVIEW

The Safe-Stop TMA is a totally unique TMA design that provides maximum protection with minimal length and weight. This system measures a compact 3.98 m (13'2") long yet provides NCHRP 350, Test Level 3 TMA protection for design impacts of speeds up to 100 km/h (62 mph). Its two lightweight aluminum cartridges are contained in a reusable steel support frame.

### MEETS MANDATORY & OPTIONAL NCHRP 350, TL-3 TESTS

The Safe-Stop TMA meets NCHRP 350, Test Level 3 and has passed all mandatory and optional tests recommended in the NCHRP 350 report. The TMA's proven high speed performance, along with the added safety assurance of the optional offset and angle-impact tests, make this TMA one of the safest choices in TMA protection. When design impacted, the steel support frame collapses and the aluminum cartridges crush to absorb the energy of impact, bringing the vehicle to a safe, controlled stop and preventing it from underriding the truck.

### FEATURES AND BENEFITS

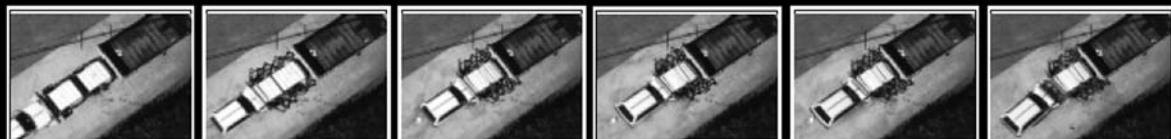
- ▶ Passes all mandatory and optional NCHRP 350 100km/h (62 mph) tests.
- ▶ Culmination of years of TMA engineering and in-field experience.
- ▶ Ideal for high-speed work zones up to 100 km/h (62 mph).
- ▶ Steel frame is reusable after a typical design impact.
- ▶ Simple attachment options mount to standard truck underrides.
- ▶ Lightweight, compact design provides easy handling.
- ▶ Hydraulic system lowers and raises TMA for storage.
- ▶ Mounting options include standard, Quick-Mount and Tailgate Mount.



**ENERGY ABSORPTION  
SYSTEMS, INC.**

[WWW.ENERGYABSORPTION.COM](http://WWW.ENERGYABSORPTION.COM)

### SAVING LIVES BY DESIGN



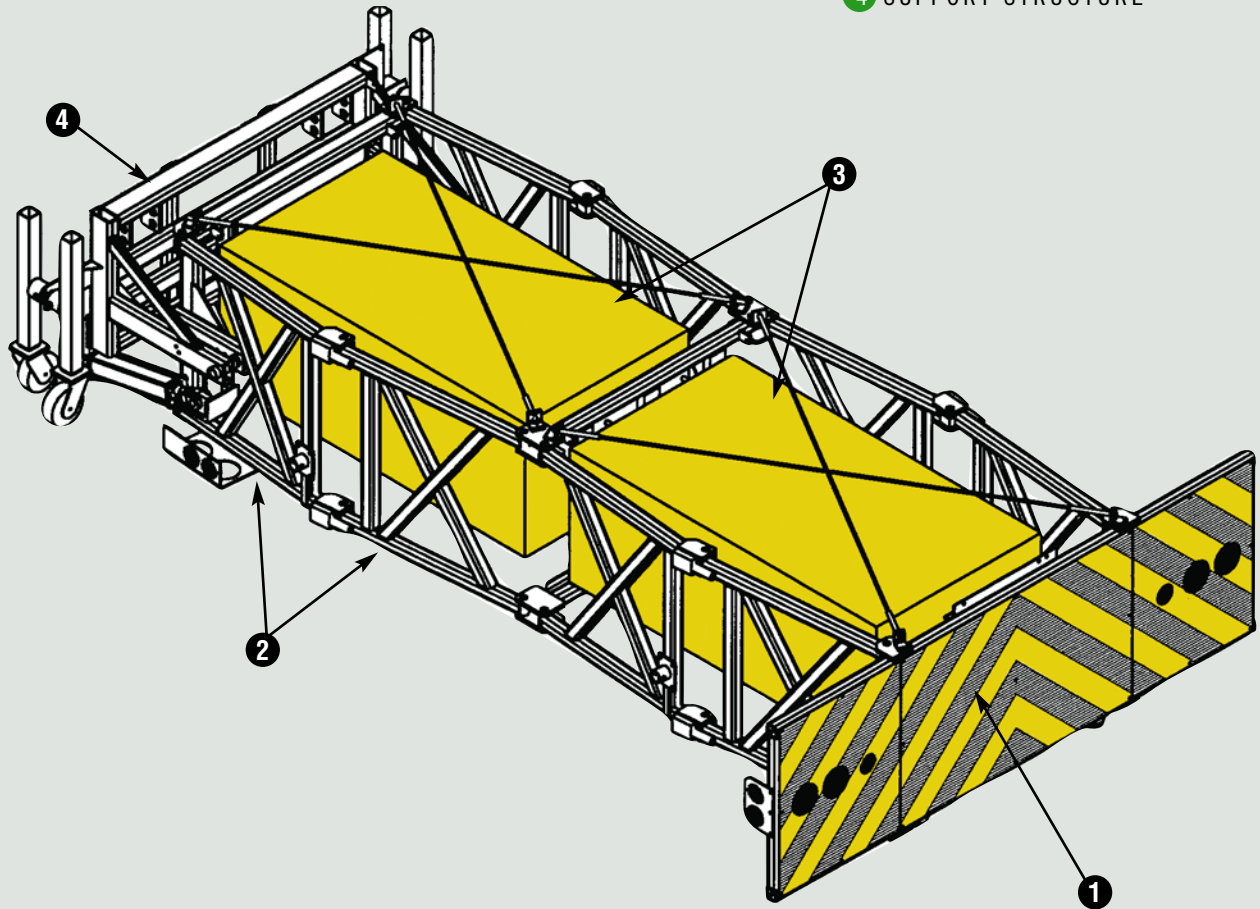
## FAST & EASY REFURBISHMENT

- ▶ The Safe-Stop TMA's reusability reduces both refurbishment costs and repair time. In fact, the Safe-Stop TMA is so easy to refurbish, it can be done in the field, if required.
- ▶ The Safe-Stop TMA's steel support frame and strike plate are reusable after a typical design impact. Only the two aluminum Safe-Stop cartridges need to be replaced in most cases.
- ▶ Four hand crank jacks with swivel casters are attached to the system to allow the TMA to be easily moved during attachment and detachment.
- ▶ Withstands nuisance impacts up to 10 km/h (6 mph) with little or no damage.
- ▶ Successfully tested in vibration, corrosion and water resistance tests.
- ▶ Field tested over 4000 km (2500 miles).

## SPECIFICATIONS

Length From Back of Truck	3.98 m (13'2")
Width	2.36 m (7'9")
Weight	906 kg (1996 lb.)
Road Clearance	30.55 mm (12"±1")

- 1 IMPACT FACE
- 2 SAFE-STOP COLLAPSIBLE FRAME
- 3 SAFE-STOP CARTRIDGES
- 4 SUPPORT STRUCTURE



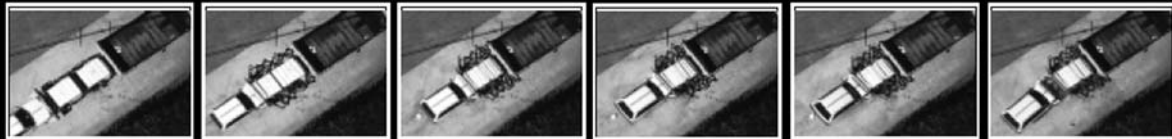
WWW.QUIXTRANS.COM



ENERGY ABSORPTION  
SYSTEMS, INC.

35 East Wacker Drive • Chicago, IL 60601  
Tel: (312) 467-6750 • Fax: (312) 467-9625  
www.energyabsorption.com

## SAVING LIVES BY DESIGN



Distributed By:

General specifications for the Safe-Stop TMA are subject to change without notice to reflect improvements and upgrades. Additional information is available in the Product Manual for this system. Contact Energy Absorption Systems for details.